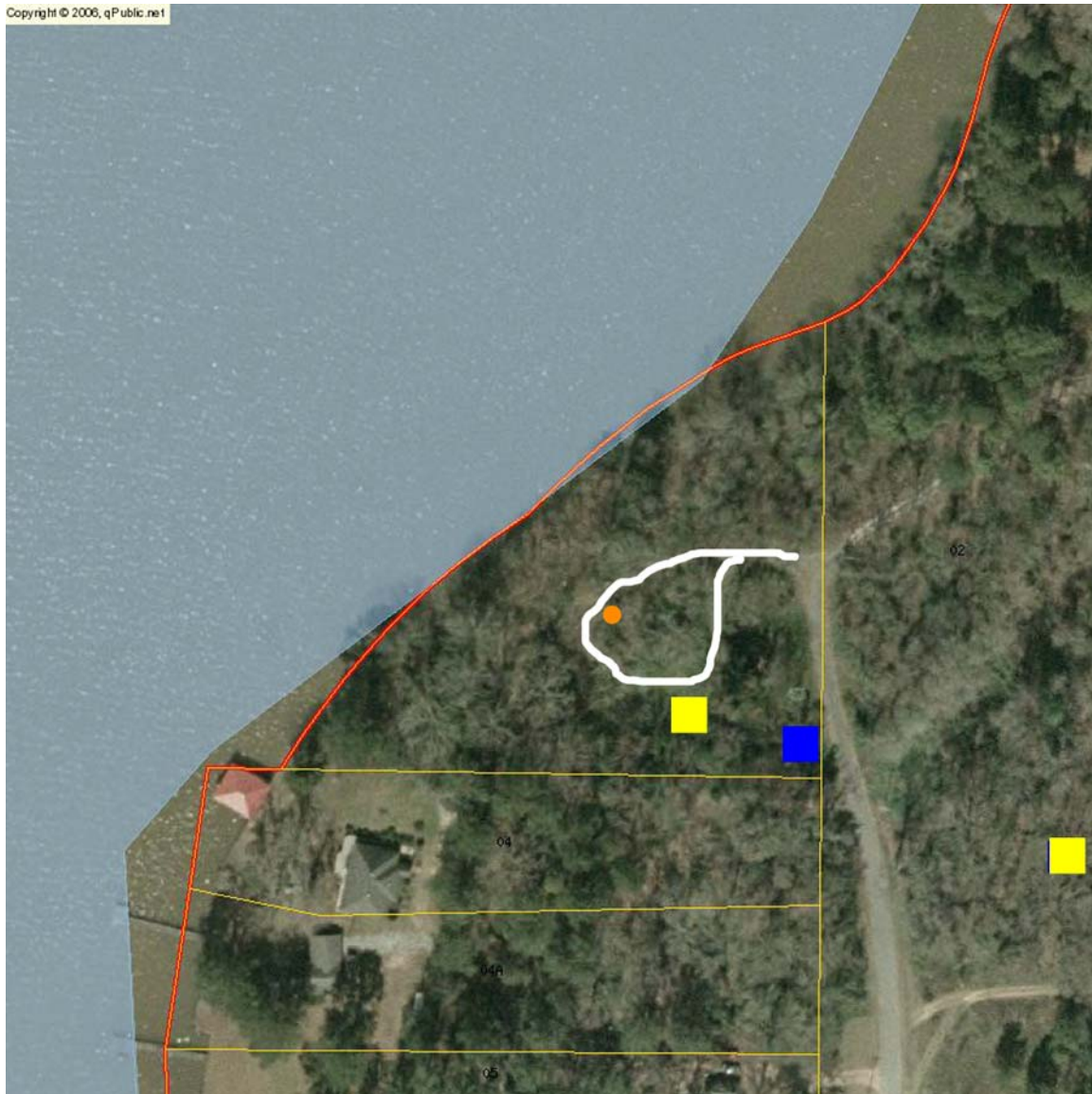


Appendix 88 to  
*THE HISTORY OF CHEHAW COUNCIL*

# Camp Thronateeska Current Photos and Map



**White is the internal camp road, Orange dot is the wellhead location,  
Yellow squares are the scout cabins, and blue dot is the house.  
The yellow square to the far right is the one that has been moved across the access road.**



**Original wellhead.**



**The only original cabin still in its original location.**



**The only other original cabin.  
This cabin has been moved across the access road.  
This photo shows the air vents under the overhang.**



**The house, which is by the access road, was not part of the original camp.**

*(Photos by Mike Greene, 2008. Assistance in identification of structures by William Athon.)*